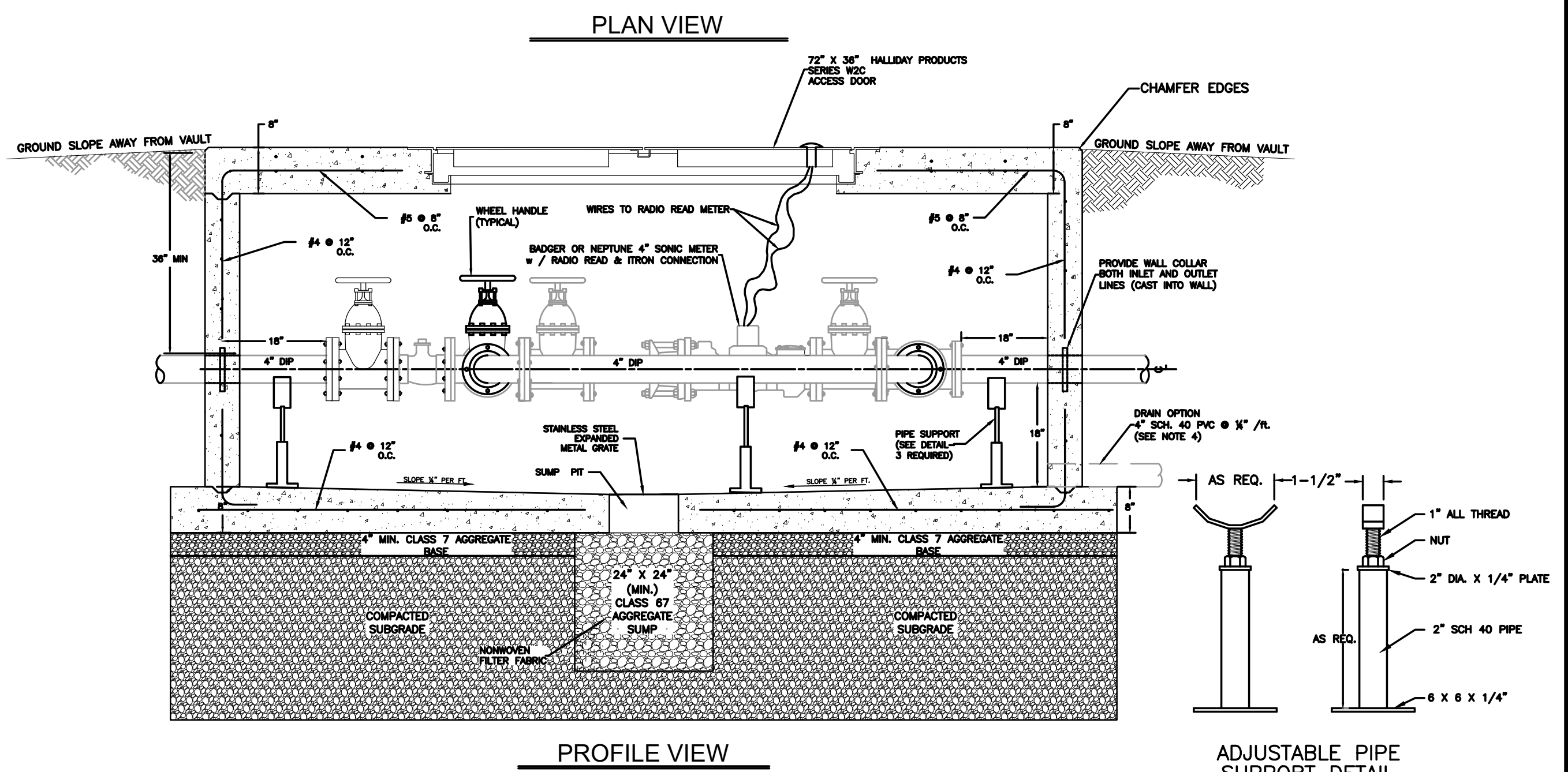
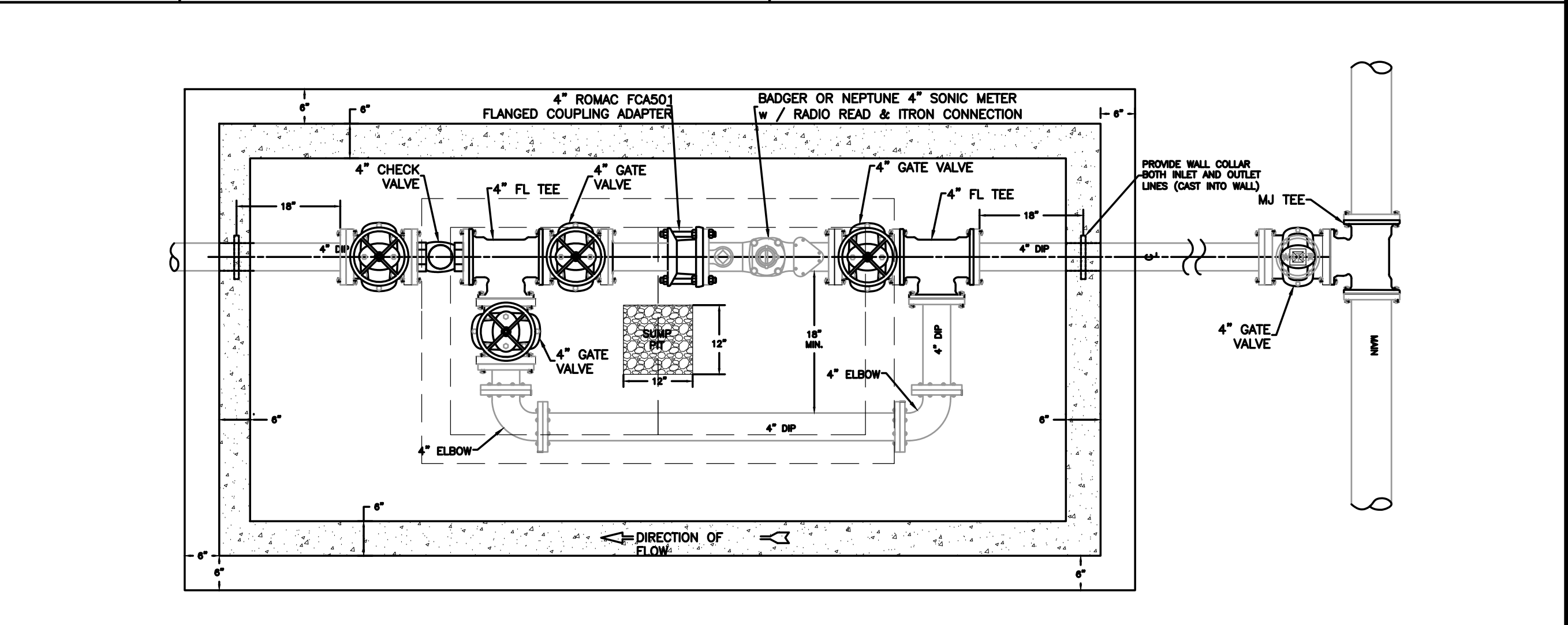


- NOTES:**
- 1) METERS WILL BE INCLUDED WITH THE INSTALLATION TO INSURE PROPER FIT.
 - 2) ALL BOLTS TO BE STAINLESS STEEL.
 - 3) SLOPE FLOOR TO DRAIN.
 - 4) IF POSSIBLE, PROVIDE 4" PVC DRAIN TO DAYLIGHT OR STORM SEWER. PROVIDE PVC CHECK IN DRAIN PIPE. THE AGGREGATE SUMP IS NOT REQUIRED IN THIS CASE.
 - 5) CONCRETE SHALL HAVE A MINIMUM COMPRESSIVE STRENGTH OF 4000 PSI.
 - 6) CONTRACTOR SHALL VERIFY ALL PART DIMENSIONS
 - 7) ALL MATERIALS AND LABOR FOR 3" METER VAULTS (INCLUDING METER) SHALL BE PROVIDED BY THE CONTRACTOR.



- NOTES:**
- 1) METERS WILL BE INCLUDED WITH THE INSTALLATION TO INSURE PROPER FIT.
 - 2) ALL BOLTS TO BE STAINLESS STEEL.
 - 3) SLOPE FLOOR TO DRAIN.
 - 4) IF POSSIBLE, PROVIDE 4" PVC DRAIN TO DAYLIGHT OR STORM SEWER. PROVIDE PVC CHECK IN DRAIN PIPE. THE AGGREGATE SUMP IS NOT REQUIRED IN THIS CASE.
 - 5) CONCRETE SHALL HAVE A MINIMUM COMPRESSIVE STRENGTH OF 4000 PSI.
 - 6) CONTRACTOR SHALL VERIFY ALL PART DIMENSIONS
 - 7) ALL MATERIAL AND LABOR FOR 4" METER VAULT (INCLUDING METER) SHALL BE PROVIDED BY THE CONTRACTOR.

WATER DETAILS

RWU ROGERS WATER UTILITIES

P.O. DRAWER 338
601 SOUTH 2ND ROGERS, ARKANSAS
72757-0338

DRAWN BY: **TLK**
CHECKED BY: **BTS**

DATE: **REV. DEC./25**

SHEET NO. **WD-2**

