

SEWER IMPROVEMENTS

CHATEAU TERRACE, UNIT 1

COUNTRY CLUB ESTATES

SOUTH 24TH STREET

ROGERS, ARKANSAS

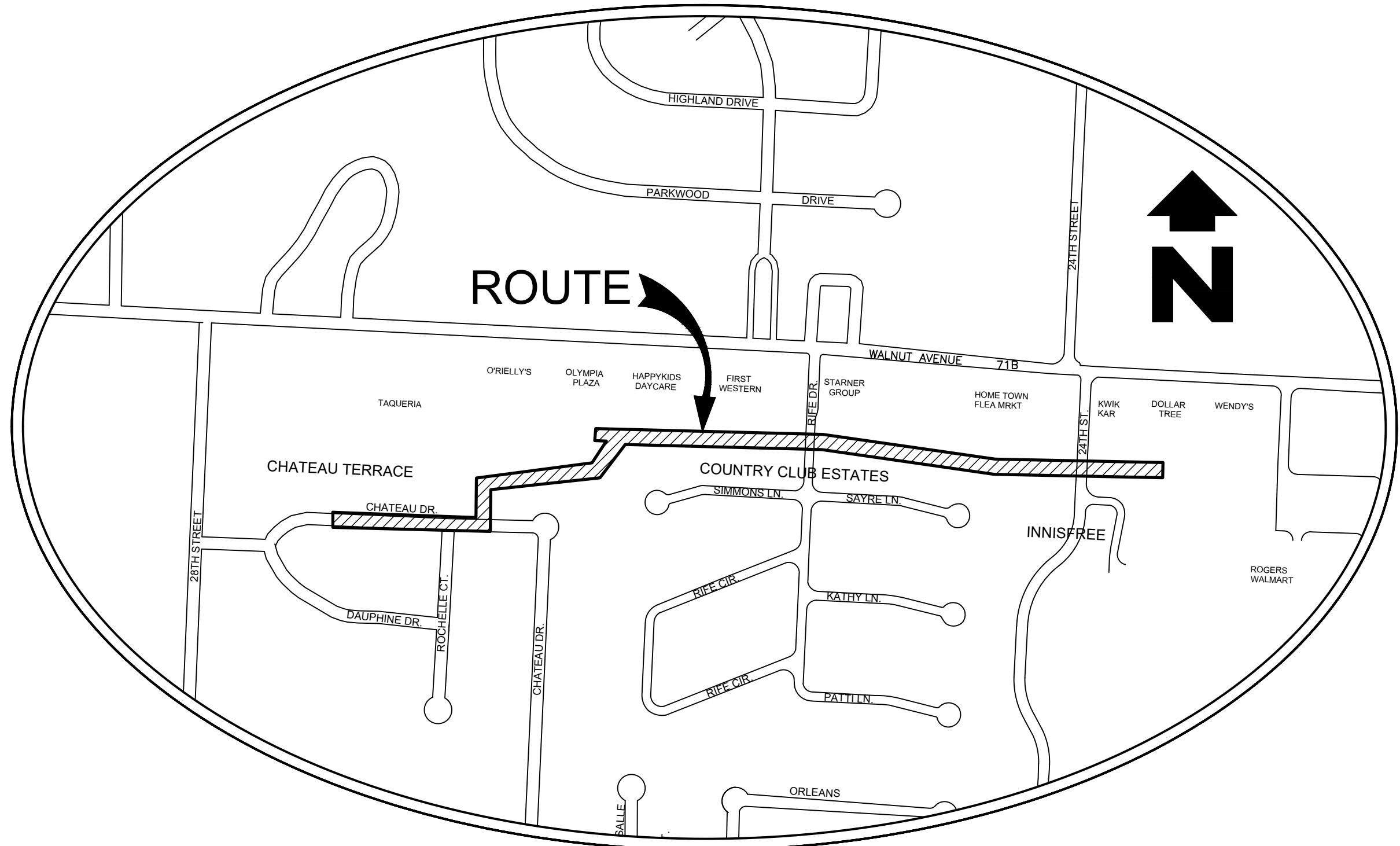
ROGERS WATER UTILITIES
601 South 2nd Street
Rogers, Arkansas 72756
Phone (479) 621-1142

ROGERS STREET DEPT
1203 North 6th Street, Suite A
Rogers, Arkansas 72756
Phone (479) 621-1140

CONTACT LIST

CIVIL ENGINEER
SAND CREEK ENGINEERING
1610 N.W. 12TH STREET
BENTONVILLE, AR 72712
(479) 464-9282

INSPECTING FOR SAND CREEK
WAYMACK SERVICES
(479) 586-6372



VICINITY MAP
NOT TO SCALE

SHEET LIST

- 1 COVER SHEET
- 2 GENERAL CONSTRUCTION NOTES
- 3 CHATEAU TERRACE SEWER IMPROVEMENTS
- 4 COUNTRY CLUB ESTATES SEWER IMPROVEMENTS
- 5 SOUTH 24TH STREET
- 6 DETAILS
- 7 RWU SEWER DETAILS

IMPROVEMENT ROUTE

FROM 21" SEWER TRUNK MAIN IN WEST CHATEAU DRIVE TO SOUTH 24TH STREET

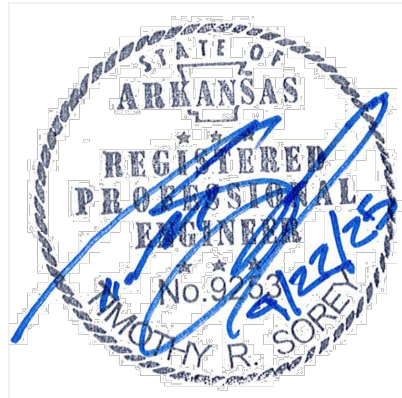
REVISION CHART

#	TITLE	DATE	NOTES:
1	REV-1	02/06/2023	INITIAL SUBMITTAL
2	REV-2	06/20/2023	REVISED PER RWU REVIEW
3	REV-3	08/07/2023	REVISED PER RWU REVIEW - ADJUSTED FOR LIFT STATION BYPASS POSSIBILITY
4	REV-4	04/11/2025	PROPOSED UTILITY EASEMENTS ADDED
5	REV-5	05/07/2025	REVISED PER RWU REVIEW - CLEANUP & SEEDING/SODDING NOTES ADDED
6	REV-6	06/10/2025	REVISED PER RWU REVIEW - ADJUSTED SANITARY SEWER NOTES
7	REV-7	07/01/2025	REVISED PER RWU REVIEW - ADJUSTED SANITARY SEWER ALIGNMENT
8	REV-8	09/22/2025	REVISED PER RWU REVIEW - ADDED INFO. CONCERNING TIE-IN AT EOA.
9	REV-9	01/09/2026	REVISED PER CITY OF ROGERS REVIEW



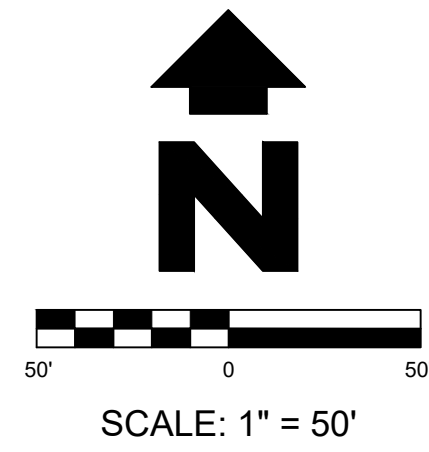
811 Know what's below.
Call before you dig.

THE LOCATIONS OF EXISTING UNDERGROUND UTILITIES ARE SHOWN IN AN APPROXIMATE WAY ONLY AND HAVE NOT BEEN INDEPENDENTLY VERIFIED BY THE OWNER OR ITS REPRESENTATIVE. THE CONTRACTOR SHALL DETERMINE THE EXACT LOCATION OF ALL EXISTING UTILITIES BEFORE COMMENCING WORK, AND AGREES TO BE FULLY RESPONSIBLE FOR ANY AND ALL DAMAGES WHICH MIGHT BE OCCASIONED BY THE CONTRACTOR'S FAILURE TO EXACTLY LOCATE AND PRESERVE ANY AND ALL UNDERGROUND UTILITIES.





Know what's below
Call before you dig



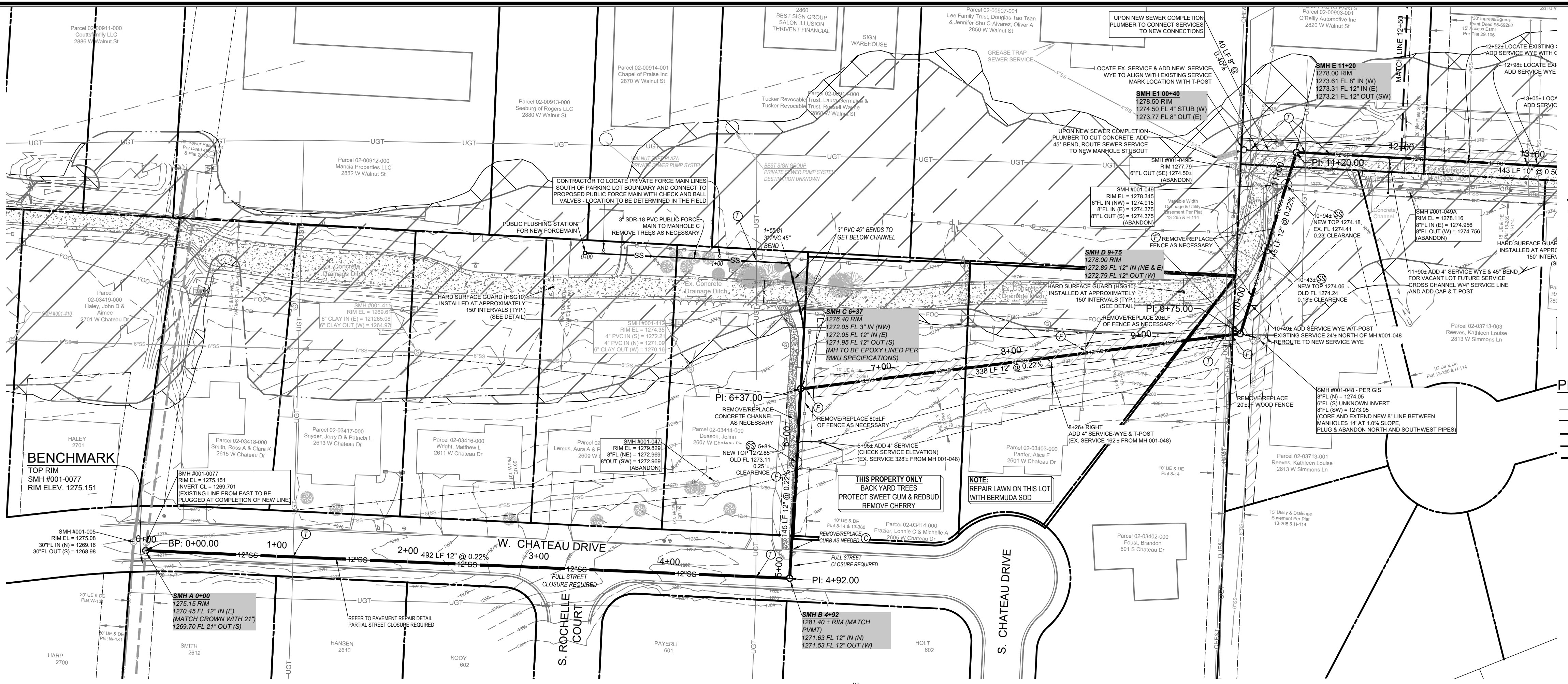
SCALE: 1" = 50'

EXISTING LEGEND

- OHE — PROPERTY LINE
- SSFM — EXISTING UTILITY EASEMENT
- 6"SS — OVERHEAD ELECTRIC LINE
- 8"SS — SANITARY SEWER FORCE MAIN
- 10"SS — 6" SANITARY SEWER LINE
- 12"SS — 8" SANITARY SEWER LINE
- FOC — EXISTING FIBER OPTIC LINE
- (M) — MONUMENT FOUND (AS NOTED)
- (P) — UTILITY POLE
- (S) — SIGN
- (W) — WATER METER
- (X) — SANITARY SEWER MANHOLE

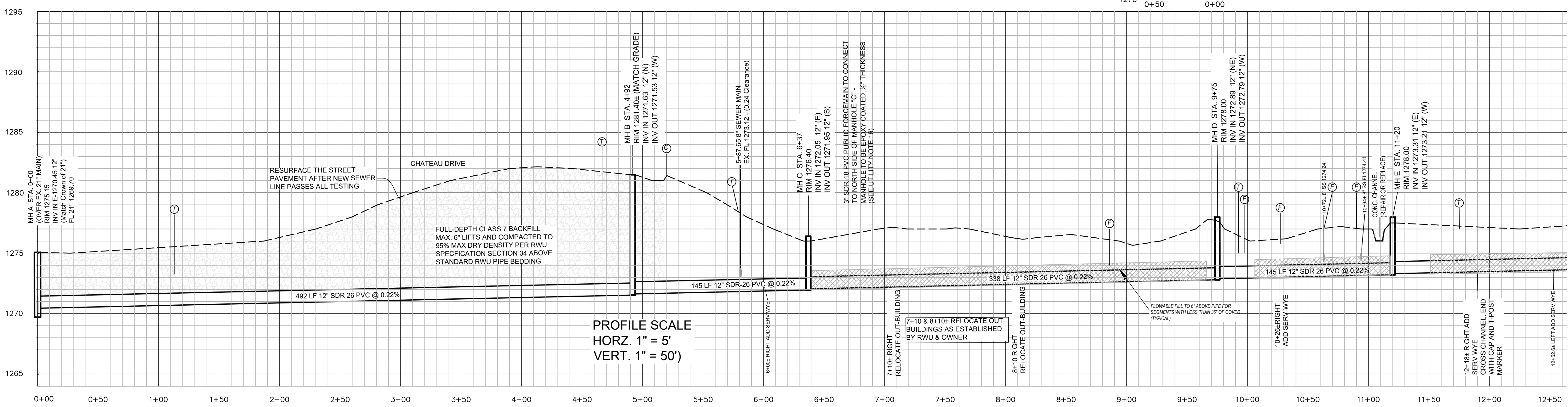
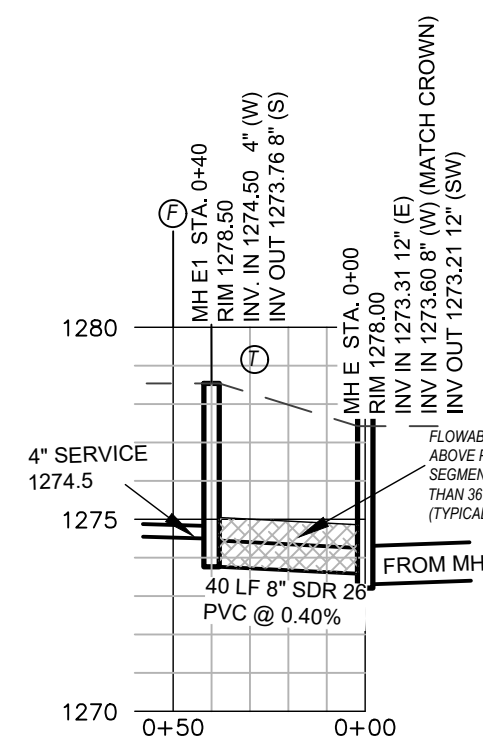
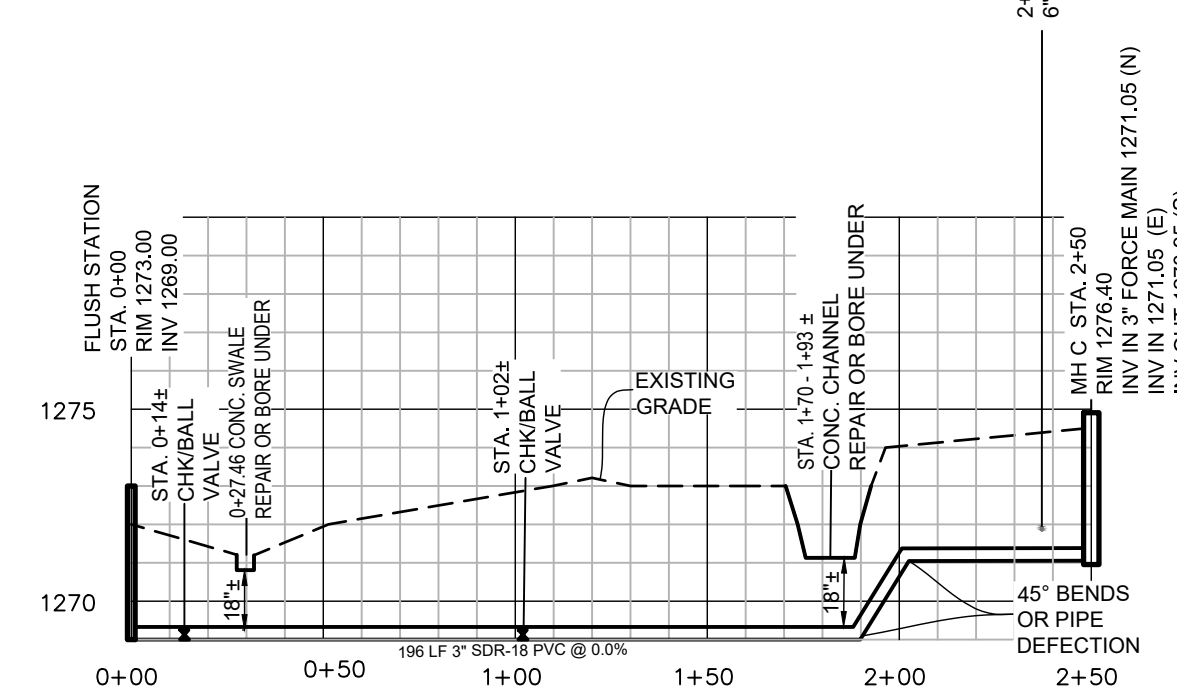
PROPOSED UTILITY/SITE LEGEND

- SS — SANITARY SEWER FORCE MAIN
- 4"SS — 4" SANITARY SERVICE LINE
- 6"SS — 6" SANITARY SEWER LINE
- 10"SS — 10" SANITARY SEWER LINE
- 12"SS — 12" SANITARY SEWER LINE
- (M) — SANITARY SEWER MANHOLE
- (C) — CURB REMOVAL/REPAIR
- (T) — PHONE/CABLE CROSSING
- (P) — GAS LINE CROSSING
- (G) — PAVEMENT
- (F) — WOOD FENCE
- (S) — STORM PIPE CROSSING
- (W) — SEWER PIPE CROSSING
- (X) — CONCRETE WALL
- (H) — FUL DEPTH GRANULAR BACKFILL
- (I) — FLOWABLE FILL OF SEWER MAINS THAT ARE 3' OR LESS IN DEPTH
- (D) — PROPOSED UTILITY EASEMENT DEDICATED BY SEPARATE DOCUMENT
- (B) — BLE A FLOOD ZONE
- (X) — BLE X FLOOD ZONE



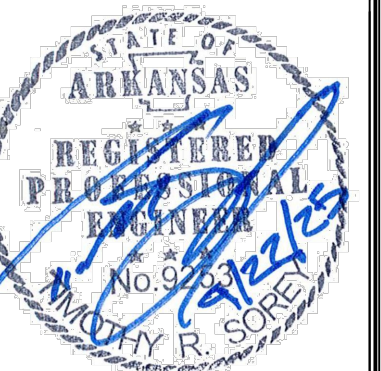
PRIOR TO THE NEW MANHOLE BEING CONSTRUCTED, ROGERS WATER UTILITIES WILL REQUIRE A POINT REPAIR FOR THAT SECTION OF THE 21" MAIN. POINT REPAIR SHALL BE MADE WITH A NON-SHEAR PRODUCT SUCH AS FERNOCO. COORDINATE WITH RWU FIELD OPERATIONS.

A DIVERSION BOX AT 24TH & OLIVE. WILL BE USED TO DIVERT MOST OF THE FLOW FROM THE 21" MAIN. REMAINING FLOW WILL NEED TO BE PUMPED TO THE 30" PARALLEL LINE WITH PLUG AND PUMP AT MANHOLE 001-078 AT WALNUT STREET. CONTRACTOR TO PROVIDE THE PUMP AND PLUG OR HIRE THAT FUNCTION TO BE DONE.



PROFILE SCALE
HORIZ. 1" = 5'
VERT. 1" = 50'

CHATEAU TERRACE SEWER IMPROVEMENTS
CHATEAU SEWER REHAB
ROGERS WATER UTILITIES
ROGERS, ARKANSAS

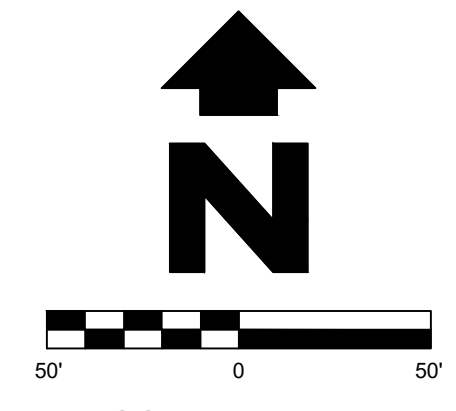


SAND CREEK
Engineering and Land Surveying
Bentonville, Arkansas (479) 466-8992

PROJECT MANAGER	MIKE HUEY
CAD	KB/MJH
SURVEY FIELD	MHMS
REVIEWED BY	TRS
SCE PROJECT #	22006
DATE	01/09/2026
SHEET	3 of 7



Know what's below
Call before you dig



SCALE: 1" = 50'

EXISTING LEGEND

- PROPERTY LINE
- - - EXISTING UTILITY EASEMENT
- - - OVERHEAD ELECTRIC LINE
- - - SANITARY SEWER FORCE MAIN
- - - 6" SANITARY SEWER LINE
- - - 8" SANITARY SEWER LINE
- - - EXISTING FIBER OPTIC LINE
- - - MONUMENT FOUND (AS NOTED)
- - - UTILITY POLE
- - - SIGN
- - - WATER METER
- - - SANITARY SEWER MANHOLE

PROPOSED UTILITY/SITE LEGEND

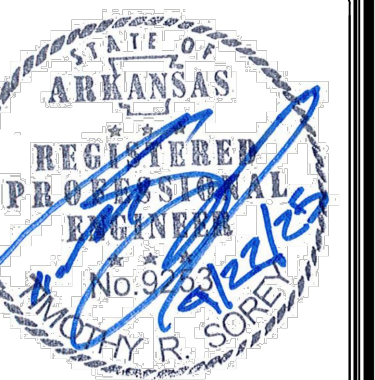
- SS SANITARY SEWER FORCE MAIN
- 4"SS 4" SANITARY SERVICE LINE
- 8"SS 8" SANITARY SEWER LINE
- 10"SS 10" SANITARY SEWER LINE
- 12"SS 12" SANITARY SEWER LINE
- SANITARY SEWER MANHOLE
- CURB REMOVAL/REPAIR
- PHONICABLE CROSSING
- GAS LINE CROSSING
- WOOD FENCE
- STORM PIPE CROSSING
- SEWER PIPE CROSSING
- CONCRETE WALL
- FUL DEPTH GRANULAR BACKFILL
- FLOWABLE FILL OF SEWER MAINS THAT ARE 3' OR LESS IN DPETH
- PROPOSED UTILITY EASEMENT DEDICATED BY SEPERATE DOCUMENT
- BLE A FLOOD ZONE
- BLE X FLOOD ZONE

COUNTRY CLUB ESTATES SEWER IMPROVEMENTS

CHATEAU SEWER REHAB
ROGERS WATER UTILITIES
ROGERS, ARKANSAS

SHEET:

PROJECT:



SAND CREEK
Engineering and Land Surveying
Bentonville, Arkansas (479) 466-8992

PROJECT MANAGER MIKE HUEY

CAD: KBMJH

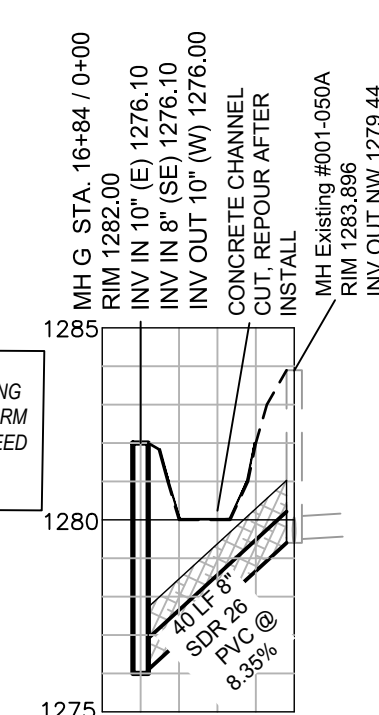
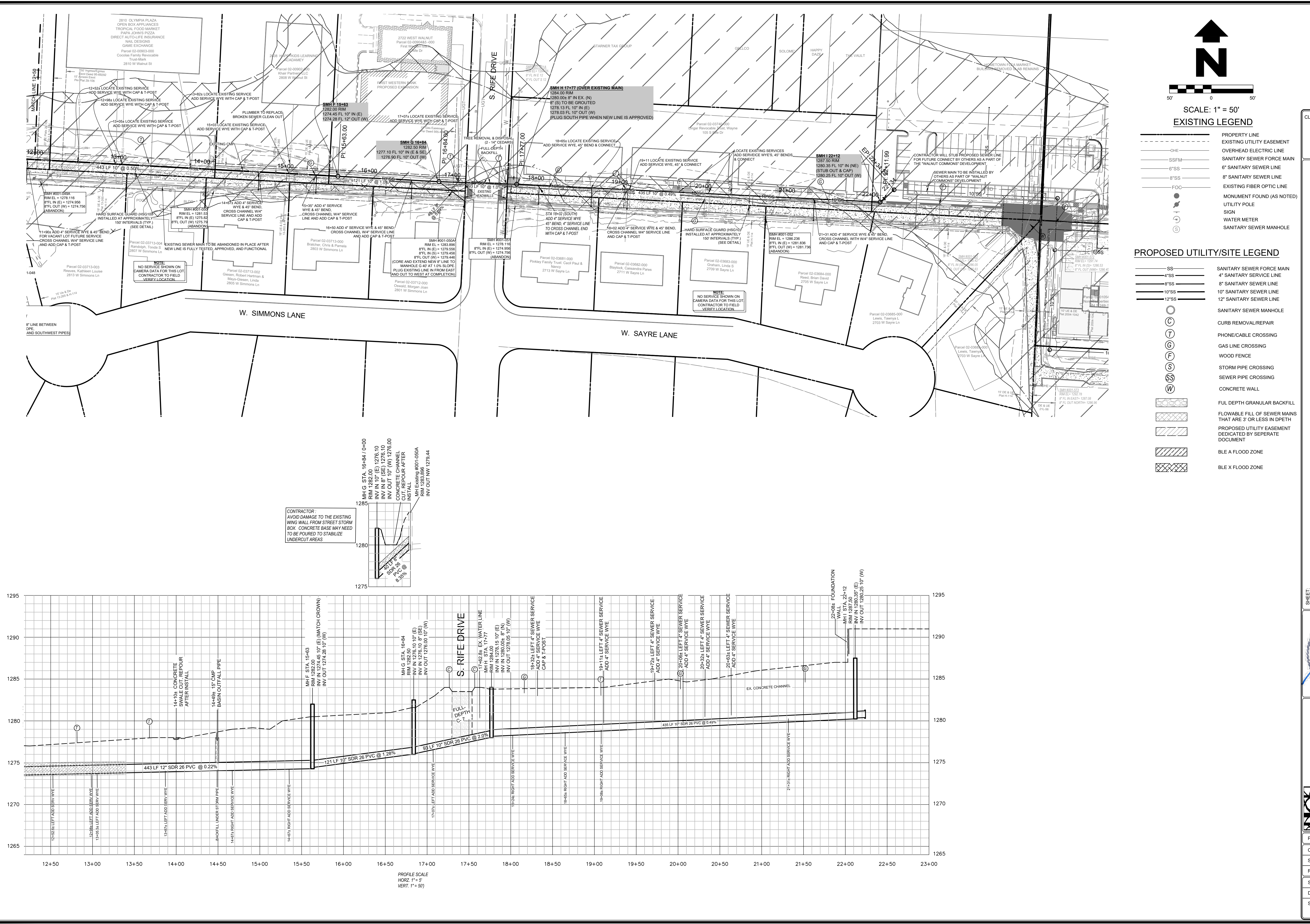
SURVEY FIELD: MHMS

REVIEWED BY: TRS

SCE PROJECT #: 22006

DATE: 01/09/2026

SHEET: 4 of 7



CONTRACTOR:
AVOID DAMAGE TO THE EXISTING
WING WALL FROM STREET STORM
BOX. CONCRETE BASE MAY NEED
TO BE POURED TO STABILIZE
UNDERCUT AREAS

MH G STA. 16+84 / 0+00
RIM EL = 1276.10
RFL IN (E) = 1276.10
RFL IN (S) = 1276.10
RFL IN (W) = 1276.10
RFL IN (SE) = 1276.10
RFL IN (SW) = 1276.10
RFL IN (NE) = 1276.10
RFL IN (NW) = 1276.10
RFL IN (E) = 1276.10
RFL IN (S) = 1276.10
RFL IN (W) = 1276.10
RFL IN (SE) = 1276.10
RFL IN (SW) = 1276.10
RFL IN (NE) = 1276.10
RFL IN (NW) = 1276.10
RIM EL = 1276.10
RFL IN (E) = 1276.10
RFL IN (S) = 1276.10
RFL IN (W) = 1276.10
RFL IN (SE) = 1276.10
RFL IN (SW) = 1276.10
RFL IN (NE) = 1276.10
RFL IN (NW) = 1276.10

PROFILE SCALE
HORZ. 1" = 50'
VERT. 1" = 50'



Know what's below
Call before you dig

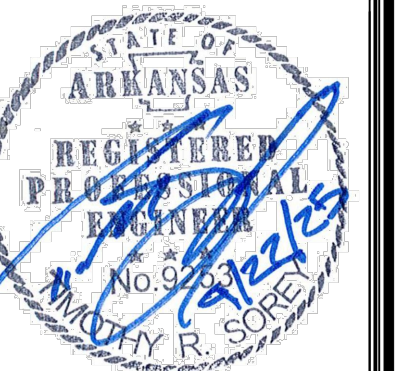
CLIENT:
ROGERS WATER UTILITIES
601 South 2nd Street
Rogers, Arkansas 72756
Phone 479-621-1142

S. 24TH STREET SEWER IMPROVEMENTS

CHATEAU SEWER REHAB
ROGERS WATER UTILITIES
ROGERS, ARKANSAS

SHEET:

PROJECT:



SAND CREEK
Engineering and Land Surveying
Bentonville, Arkansas (479) 466-8922

PROJECT MANAGER: MIKE HUEY

CAD: KB/MJH

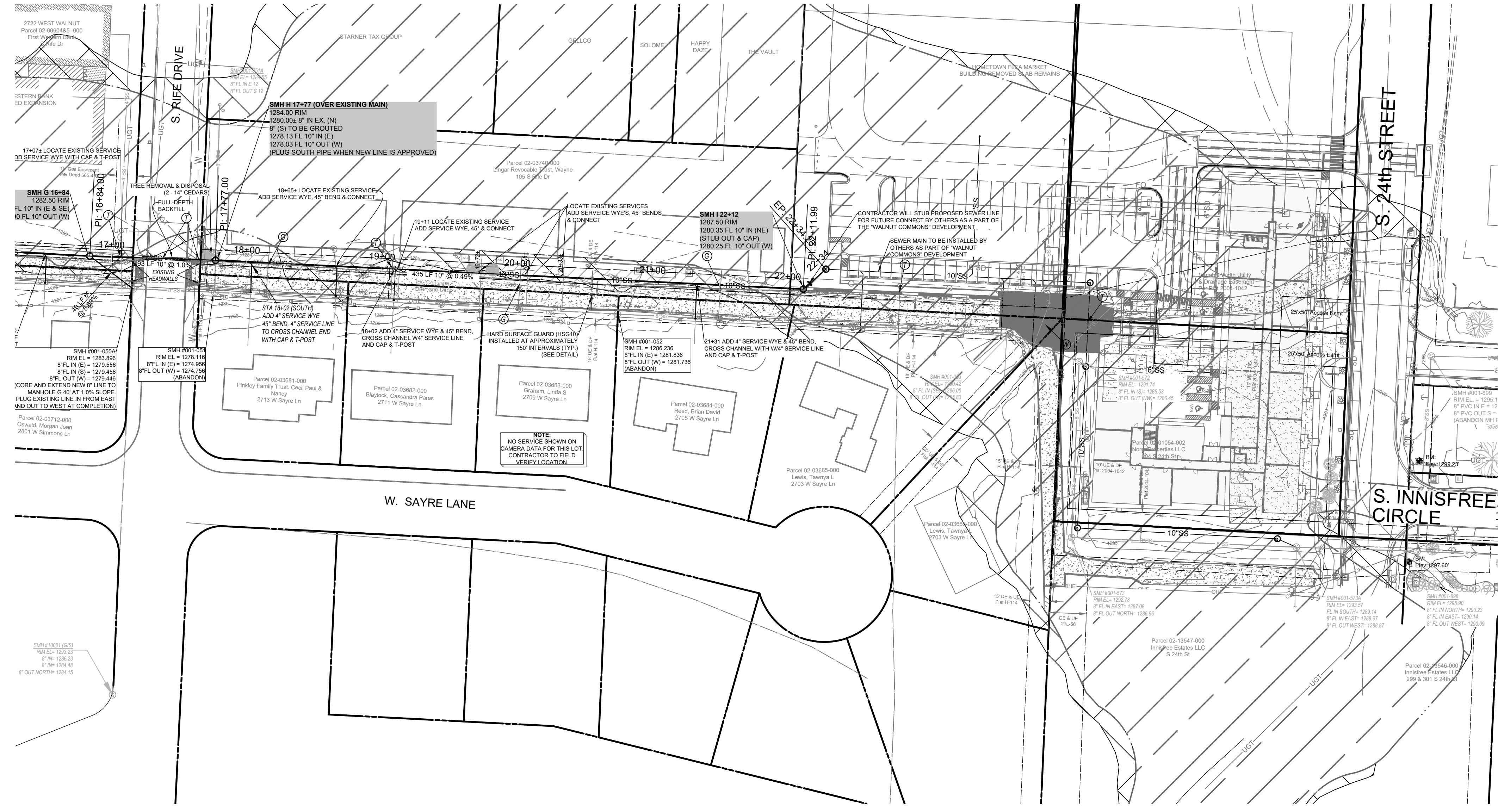
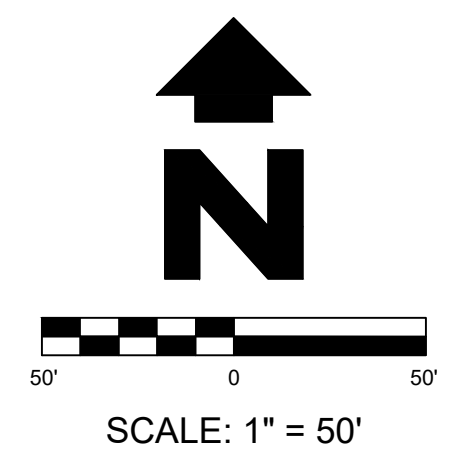
SURVEY FIELD: MH/MS

REVIEWED BY: TRS

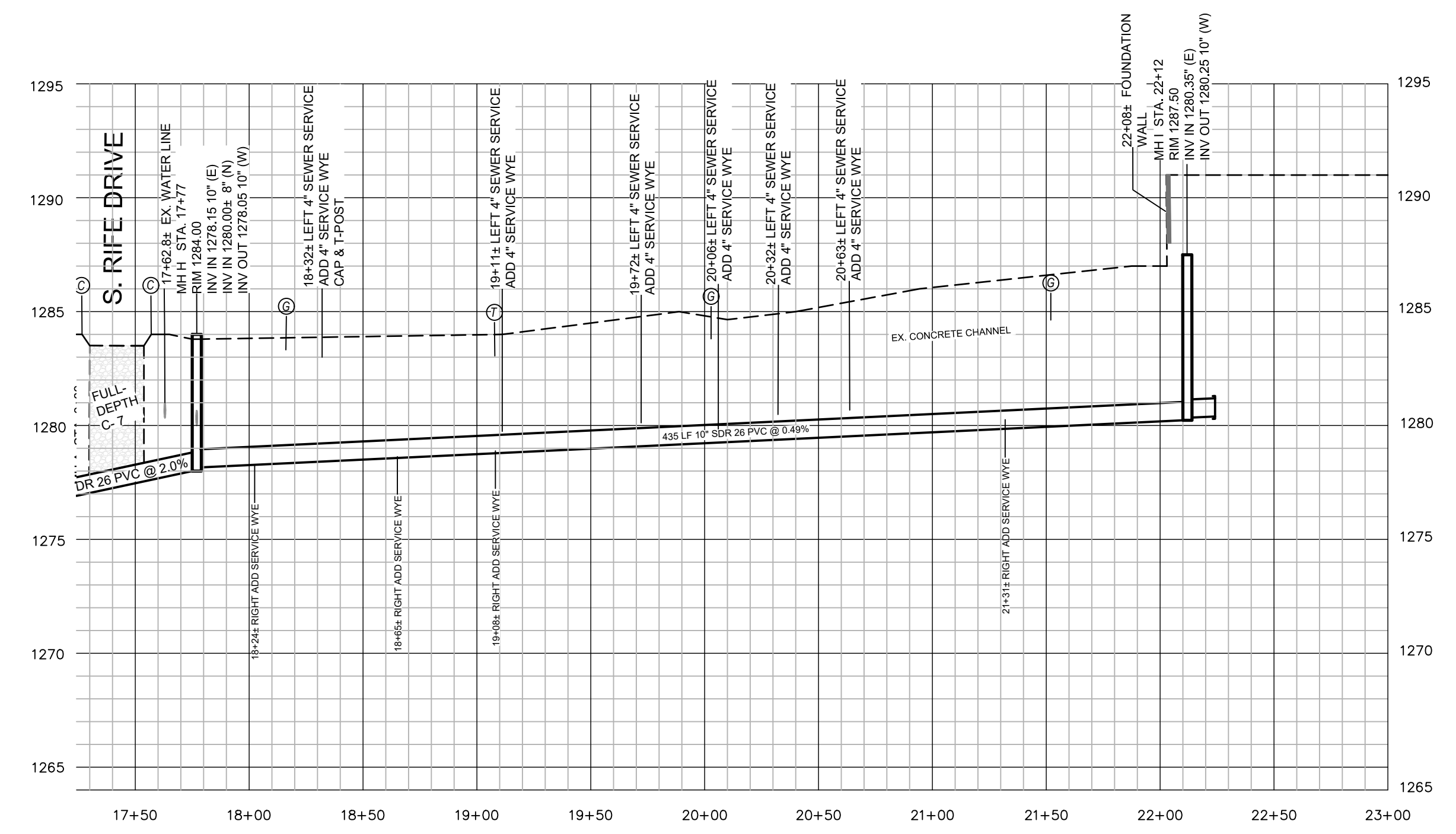
SCE PROJECT #: 22006

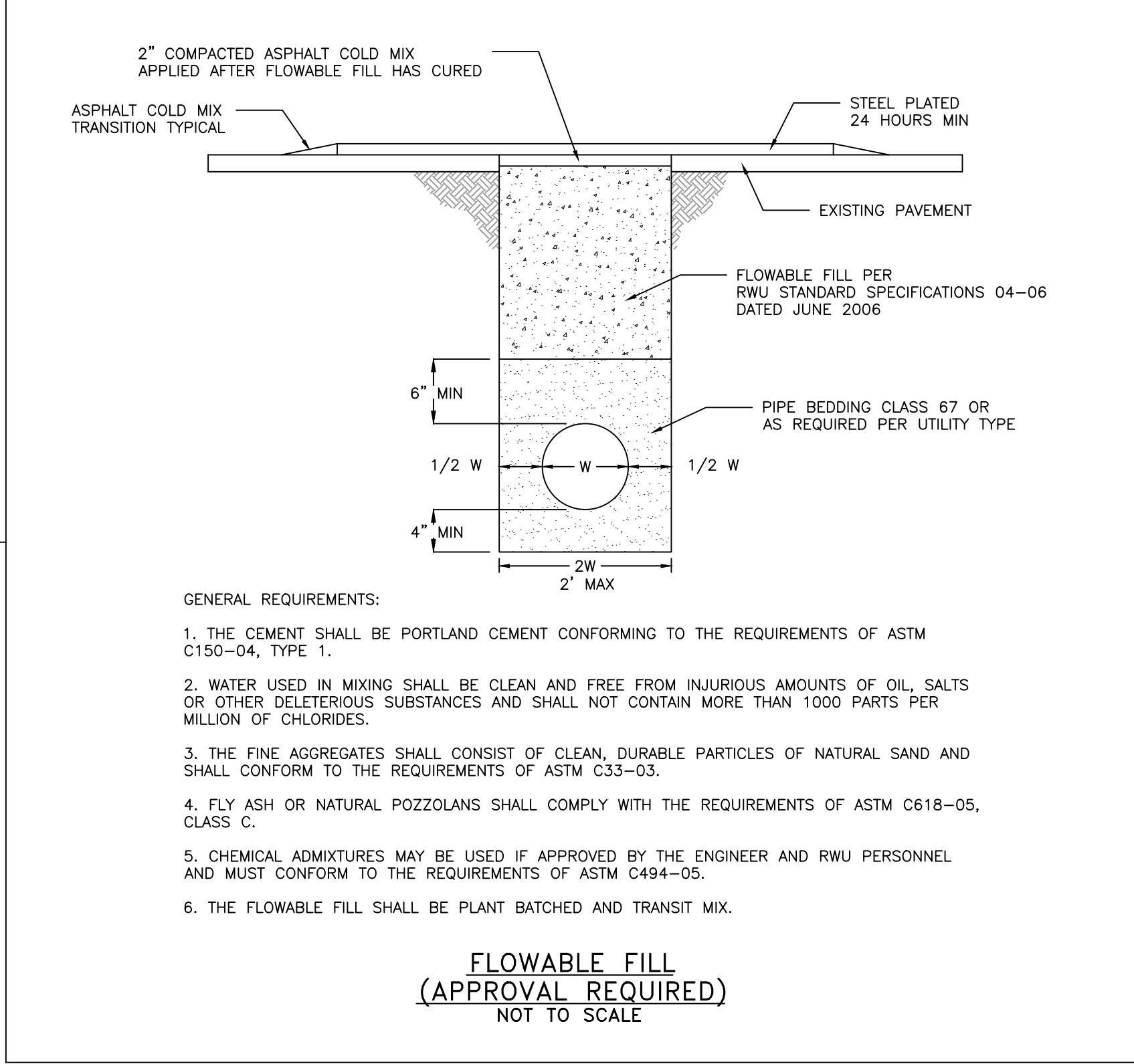
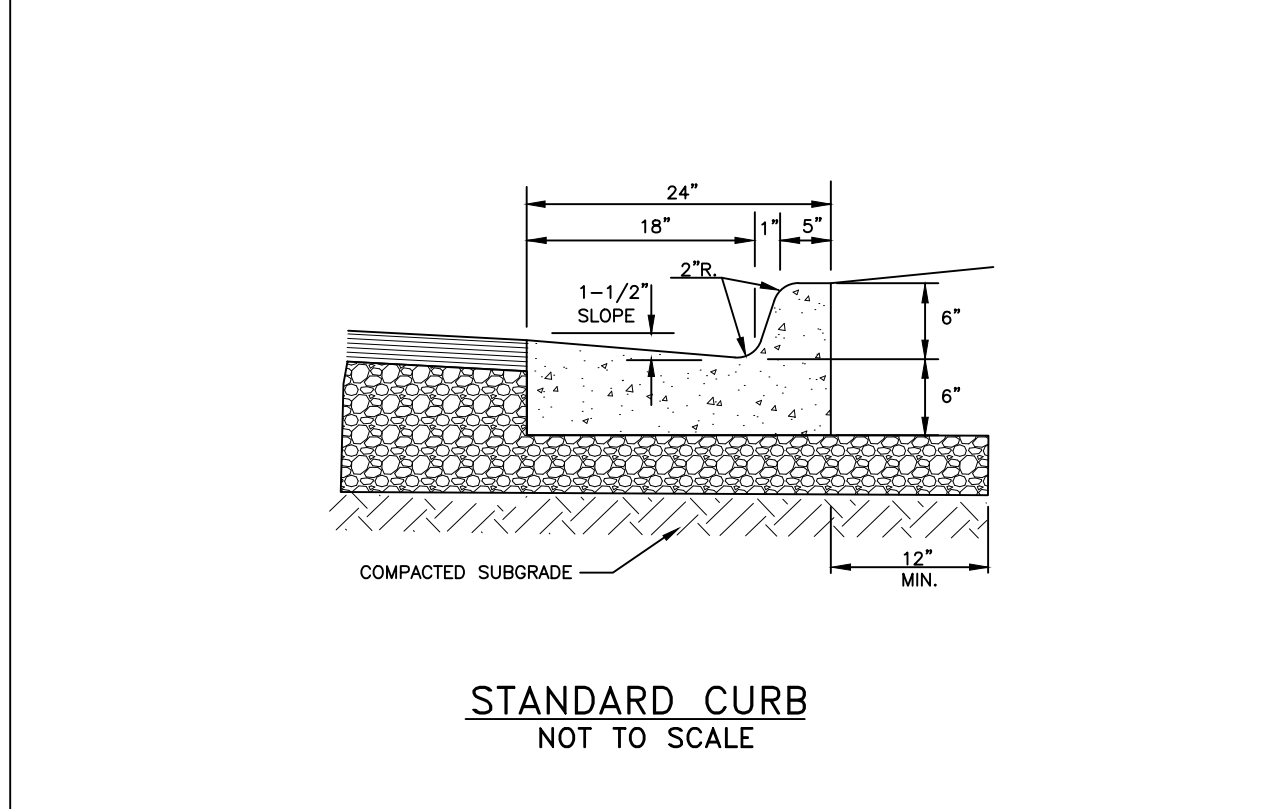
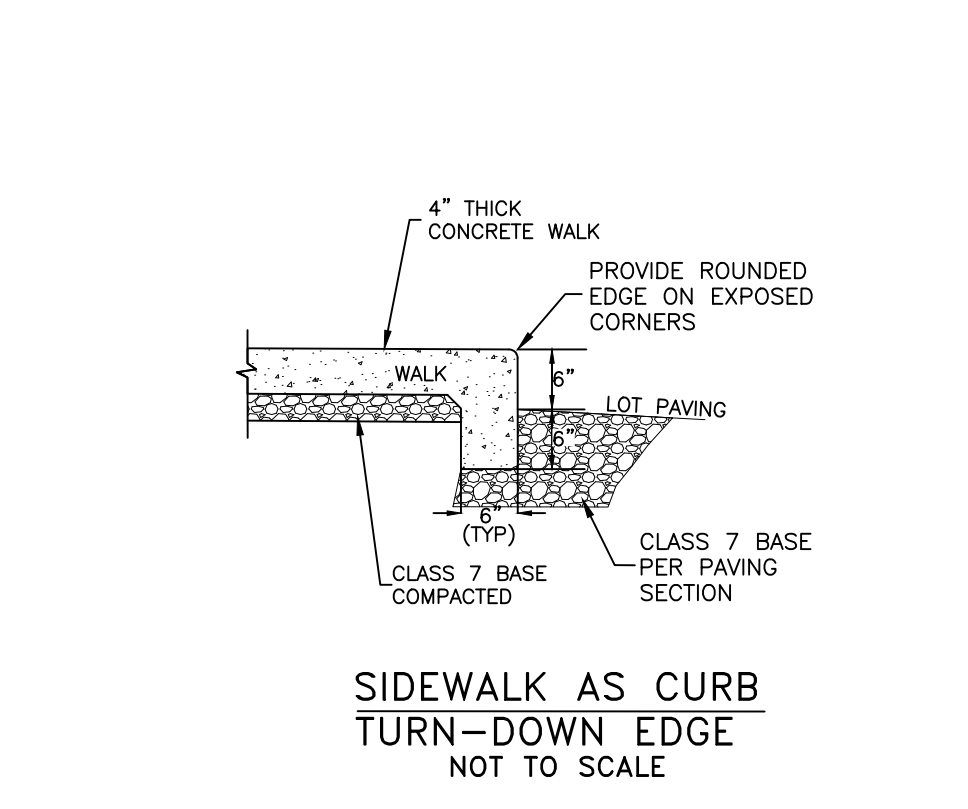
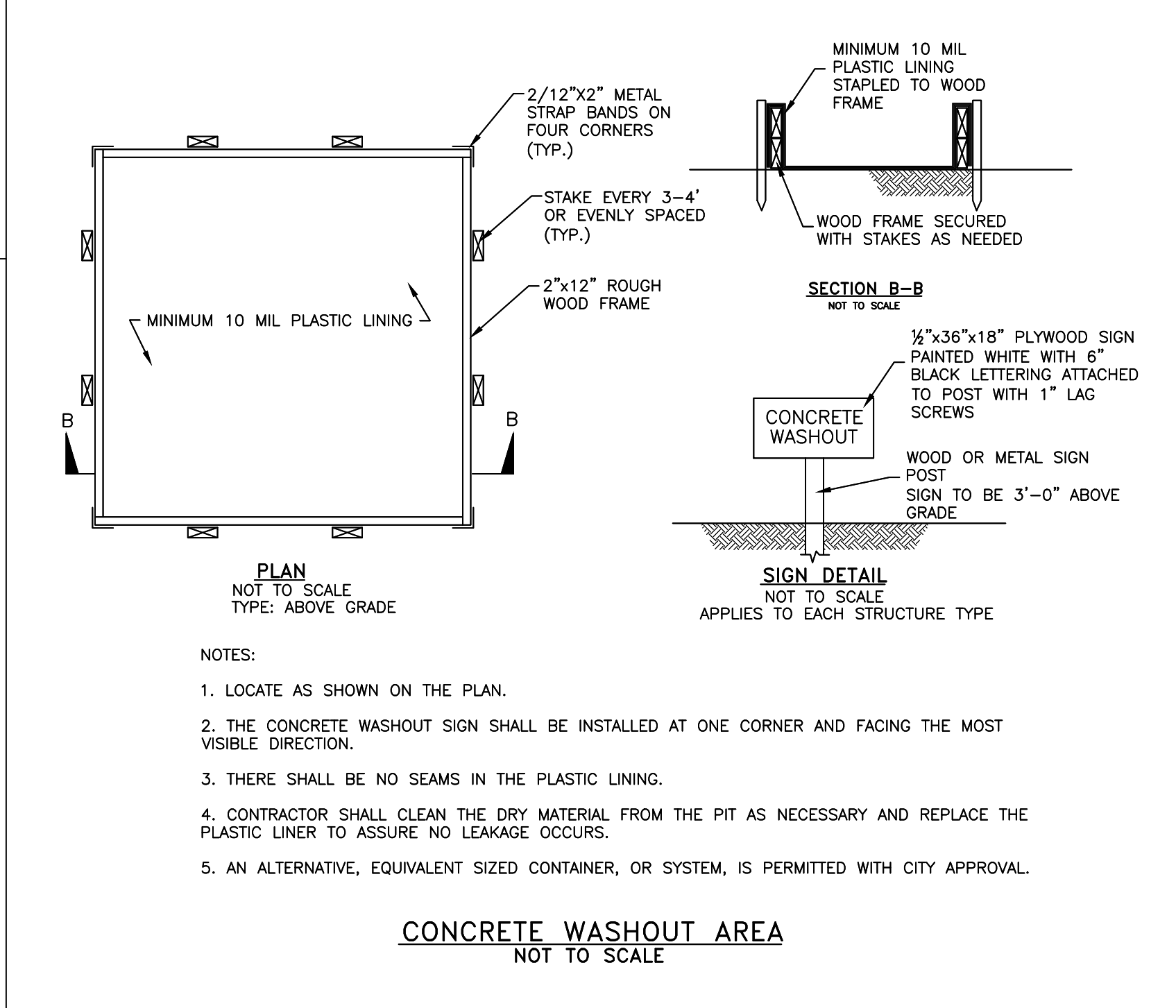
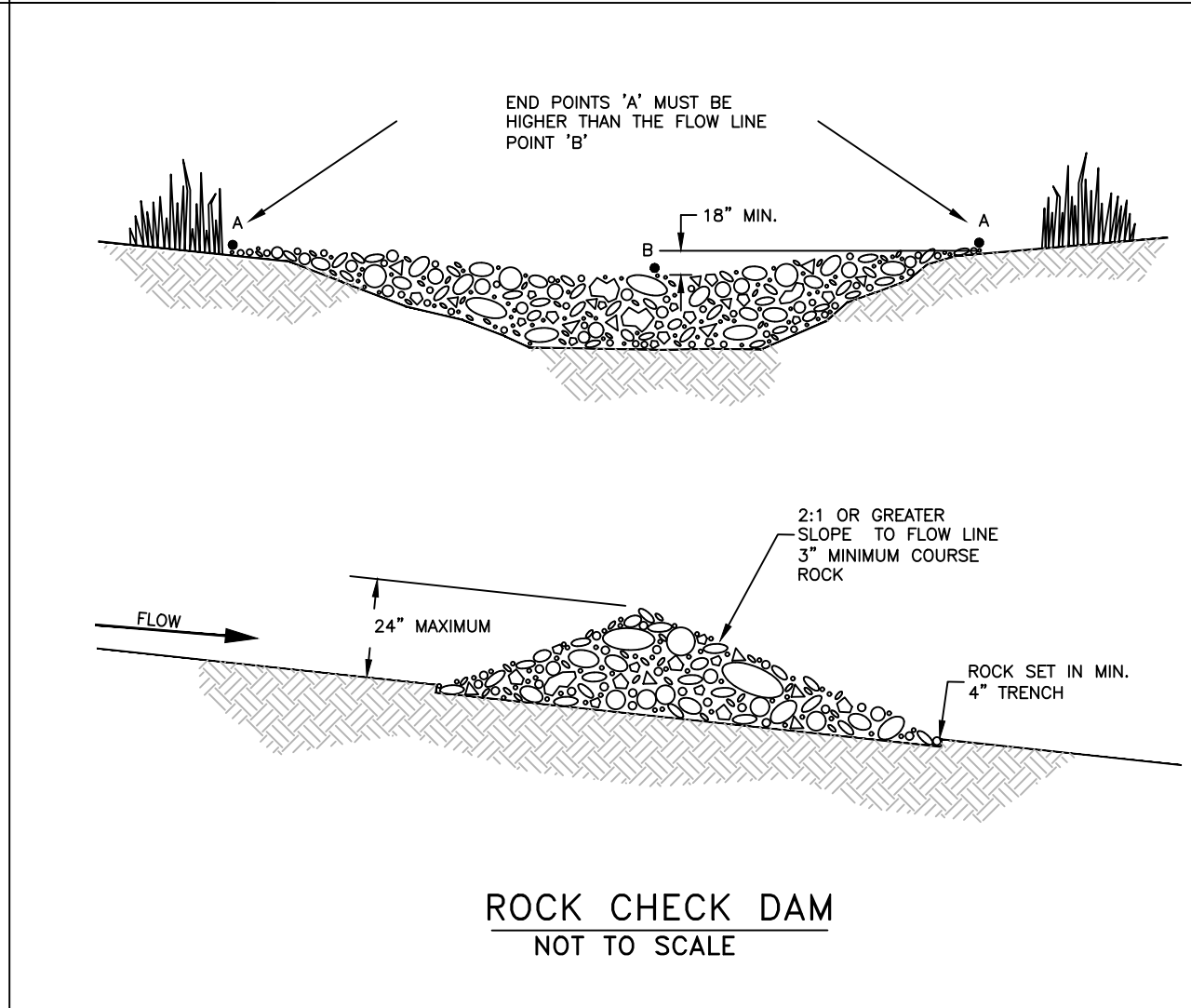
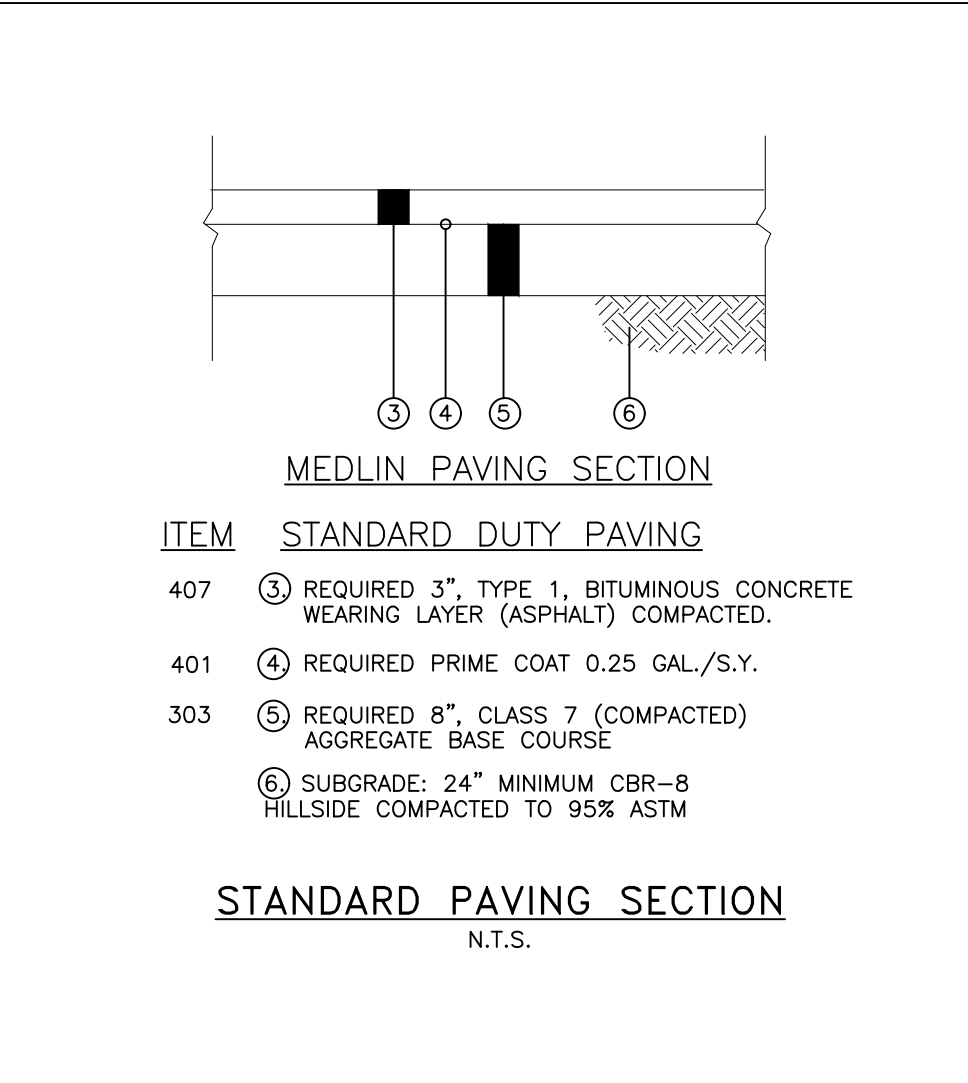
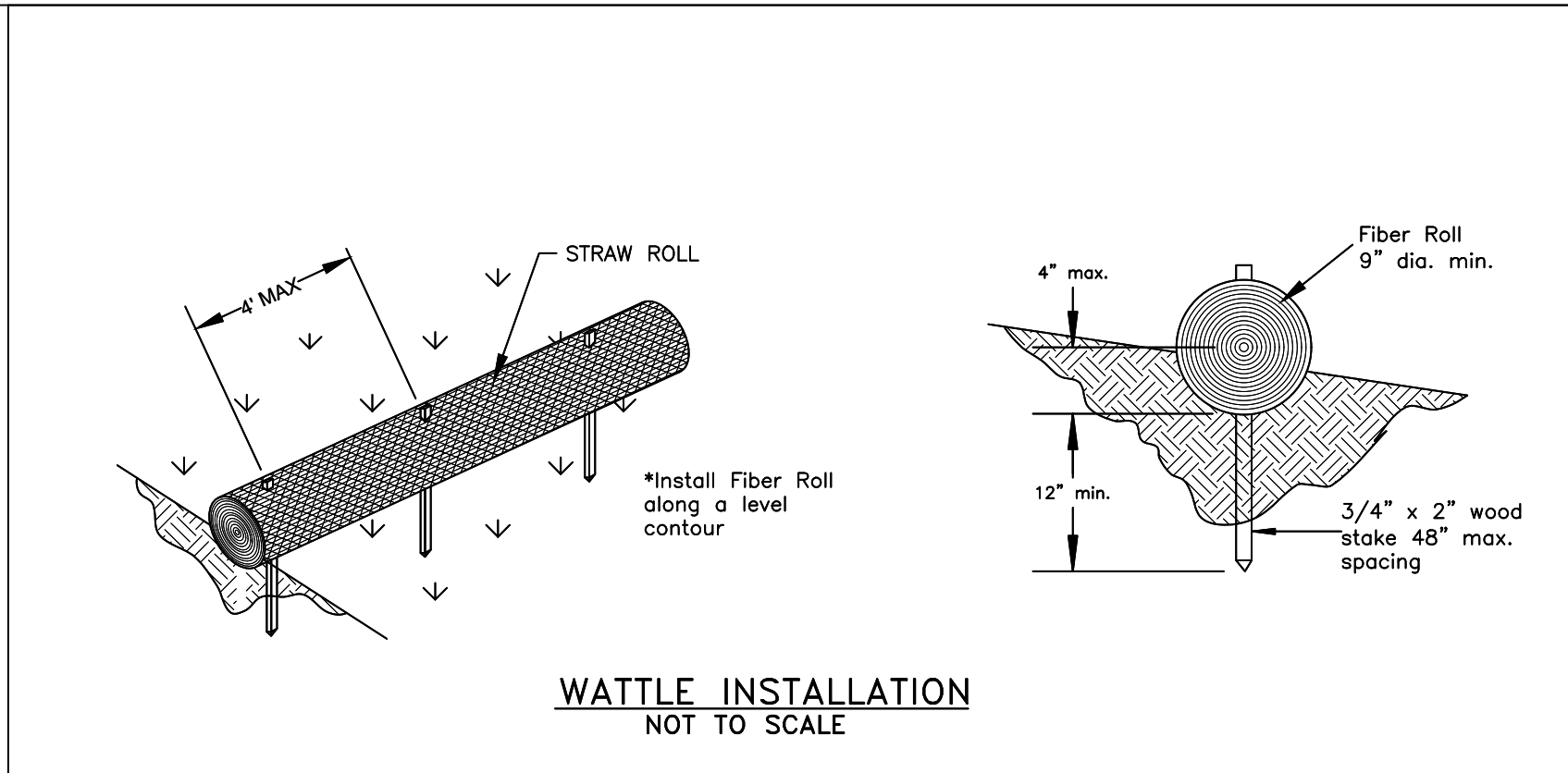
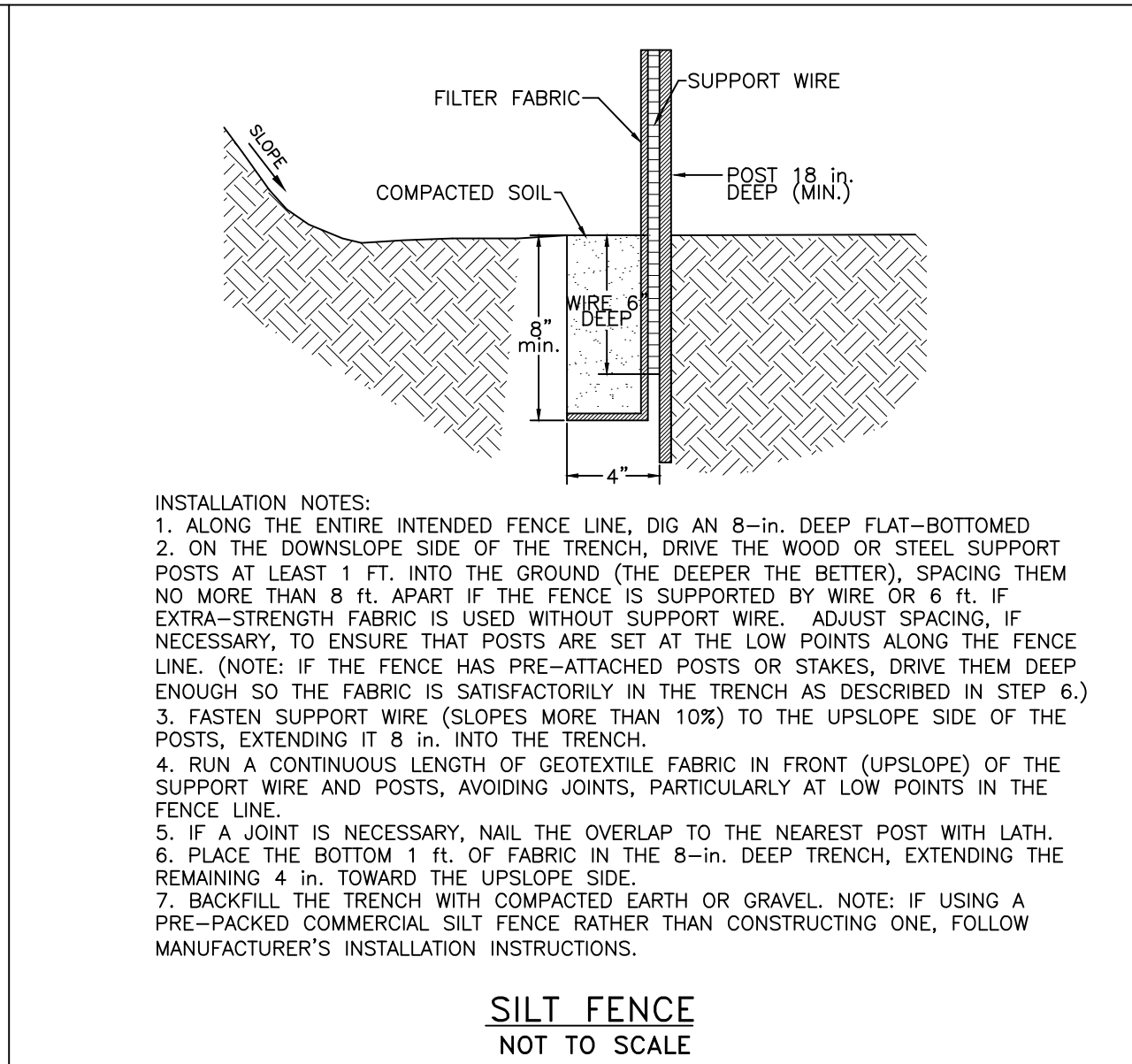
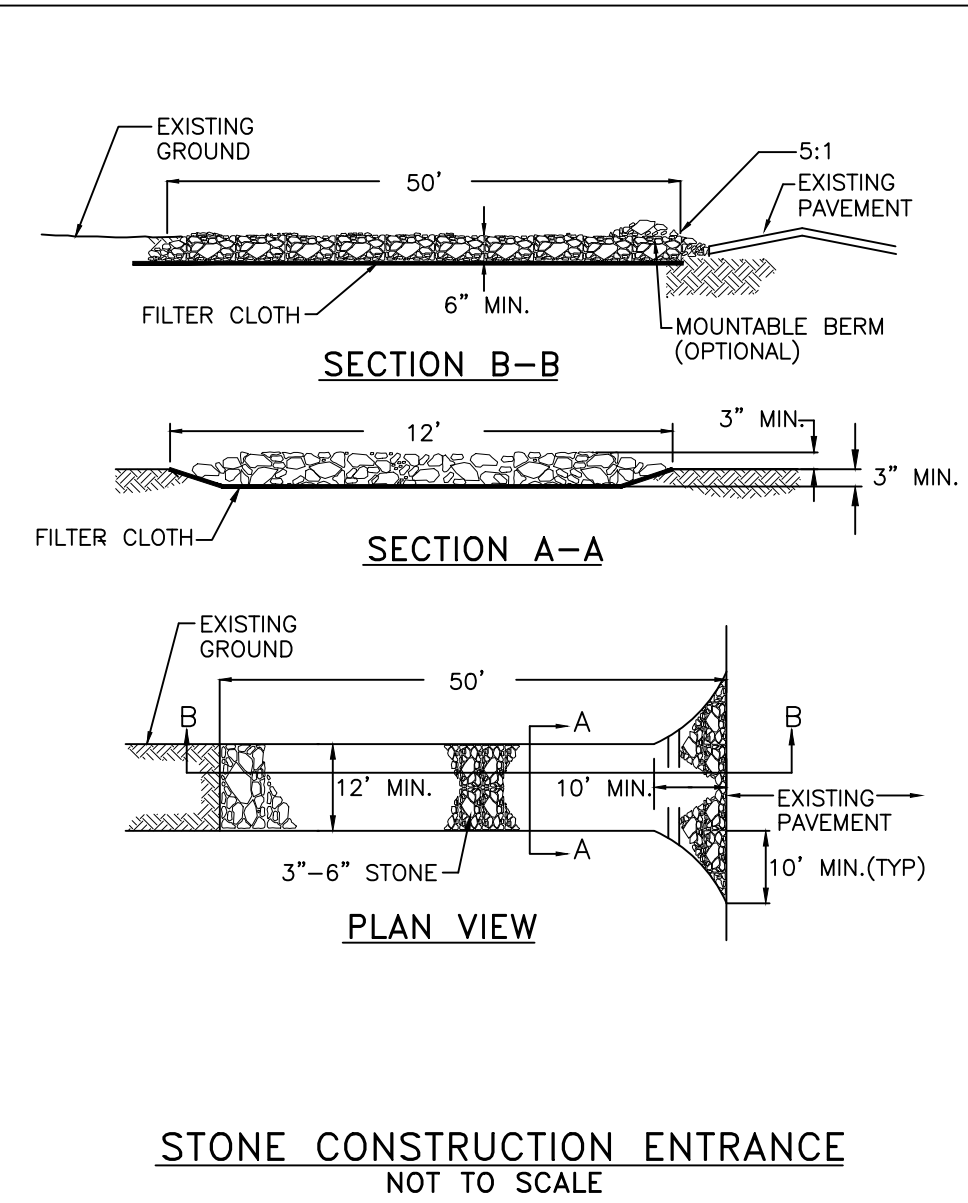
DATE: 01/09/2026

SHEET: 5 of 7



- EXISTING LEGEND**
- PROPERTY LINE
 - - - EXISTING UTILITY EASEMENT
 - - - OVERHEAD ELECTRIC LINE
 - - - SANITARY SEWER FORCE MAIN
 - 6" SS
 - 8" SS
 - 10" SS
 - 12" SS
 - EXISTING FIBER OPTIC LINE
 - MONUMENT FOUND (AS NOTED)
 - UTILITY POLE
 - SIGN
 - WATER METER
 - SANITARY SEWER MANHOLE
- PROPOSED UTILITY/SITE LEGEND**
- SS
 - 4" SS
 - 6" SS
 - 8" SS
 - 10" SS
 - 12" SS
 - SANITARY SEWER FORCE MAIN
 - 4" SANITARY SERVICE LINE
 - 6" SANITARY SERVICE LINE
 - 8" SANITARY SERVICE LINE
 - 10" SANITARY SERVICE LINE
 - 12" SANITARY SERVICE LINE
 - SANITARY SEWER MANHOLE
 - CURB REMOVAL/REPAIR
 - PHONE/CABLE CROSSING
 - GAS LINE CROSSING
 - WOOD FENCE
 - STORM PIPE CROSSING
 - SEWER PIPE CROSSING
 - CONCRETE WALL
 - FULL DEPTH GRANULAR BACKFILL
 - FLOWABLE FILL OF SEWER MAINS THAT ARE 3' OR LESS IN DEPTH
 - PROPOSED UTILITY EASEMENT DEDICATED BY SEPERATE DOCUMENT
 - BLE A FLOOD ZONE
 - BLE X FLOOD ZONE





CLIENT:
 ROGERS WATER UTILITIES
 601 South 2nd Street
 Rogers, Arkansas 72756
 Phone 479-621-1142

PROJECT:
 CHATEAU SEWER REHAB
 ROGERS WATER UTILITIES
 ROGERS, ARKANSAS

SHEET:
 DETAILS / EROSION CONTROL PLAN

STATE OF ARKANSAS
 REGISTERED PROFESSIONAL ENGINEER
 SAND CREEK
 No. 0000000000
 WALTER R. SORE

PROJECT MANAGER: MIKE HUEY
 CAD: KB/MJH
 SURVEY FIELD: MH/MS
 REVIEWED BY: TRS
 SCE PROJECT #: 22006
 DATE: 01/09/2026
 SHEET: 6 of 7

